

CONTINUING THE NARRATIVE

St Andrews Chapel Interiors

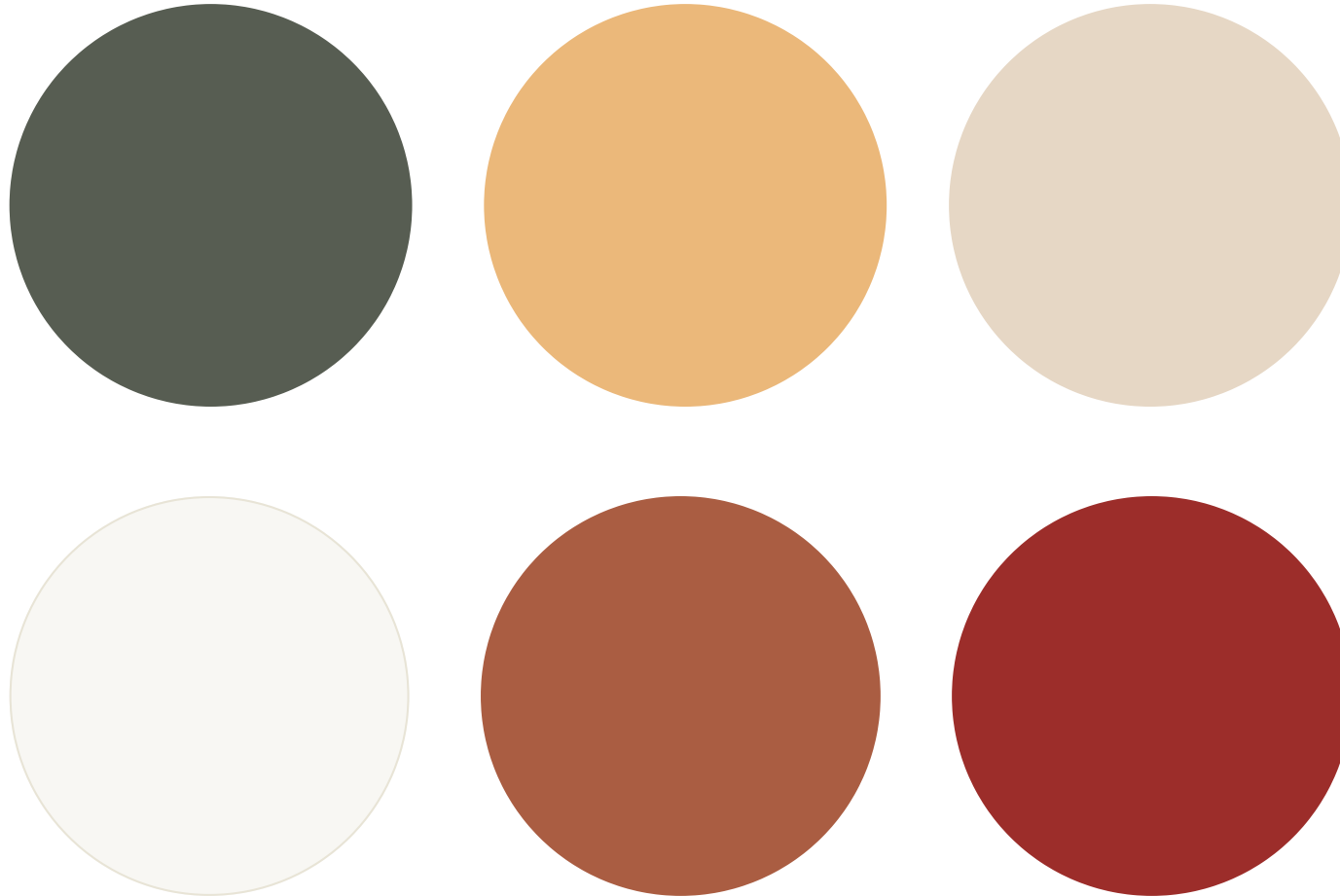
Gemma Wright and Justine Le Maistre

GEMMA WRIGHT

The following pages show an idea of how each room could be finished based on taking the building's history as the inspiration. The ideas were generated by researching the numerous stories discovered about St Andrews Chapel, extrapolating these into ideas for colours, materials and finishes that can be carried through into the final interiors.

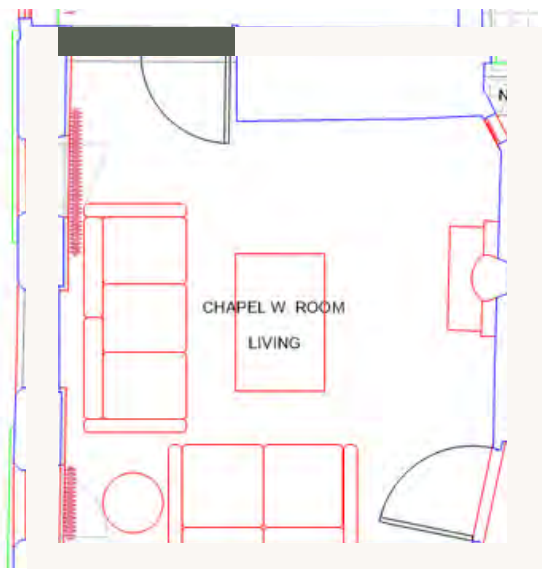
To view the full research presentation please visit www.SPAB.org.uk/old-house-project

PROPOSED SCHEME



- Our final colour palette draws from the Tudor palette, historic paint analysis, postmistress & SPAB red, and natural dye shades
- In furnishings we want to emphasise simplicity throughout the scheme, referencing medieval, Cistercian and Arts & Crafts styles
- Use of natural materials such as straw, wool, rush, timber and earthenware, complemented by dark or dull metals like pewter, wrought iron & bronze
- Sparing references to floral motifs and symbolism

APPLICATION



SITTING ROOM





DINING ROOM

symbolic artwork



warm chalky paint colour

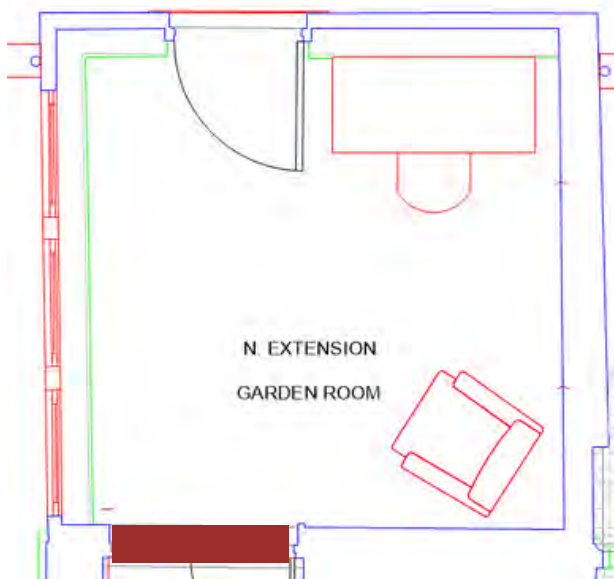
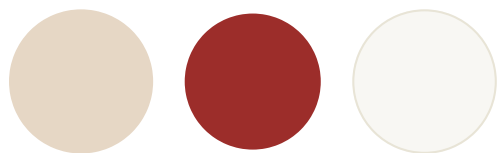
opulent velvet curtains

red doors



rustic dining table





GARDEN ROOM



potting bench

paint vaulted ceiling to brighten



could paint walls or retain cabin feel



door in red





terracotta wood stain



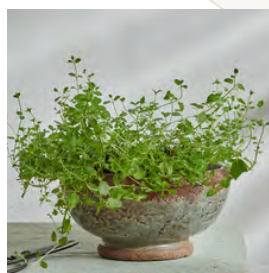
option to stain only low cabinets

or retain timber with oiled finish



KITCHEN

Earthenware accessories

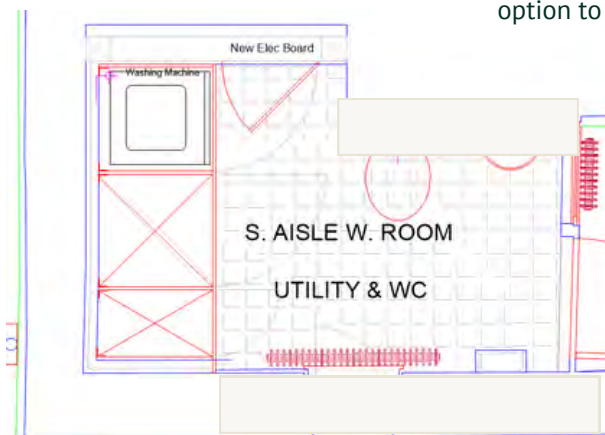


rush chairs

jute rug

rustic table



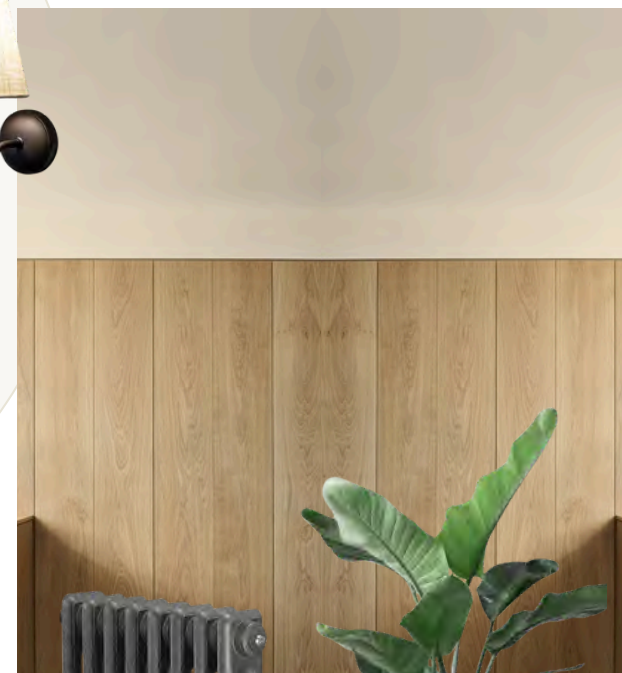


option to partially paint to zone spaces

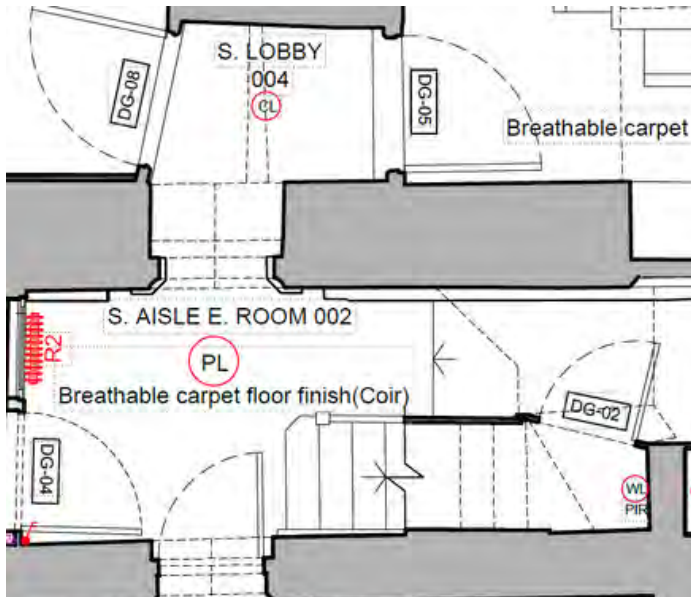
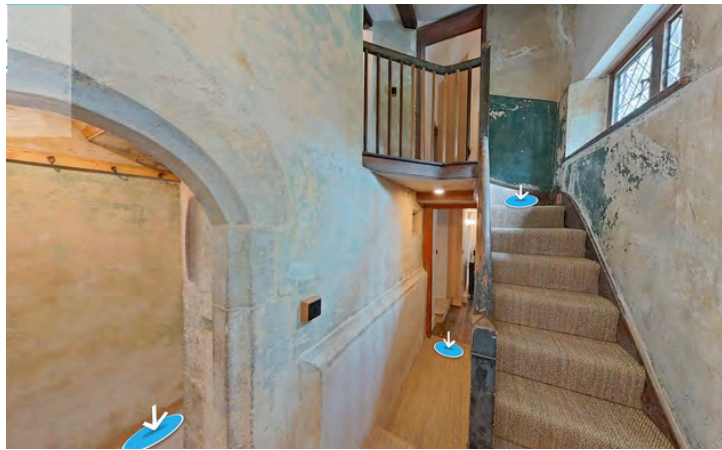
sheer cafe curtain for privacy



warm chalky paint colour

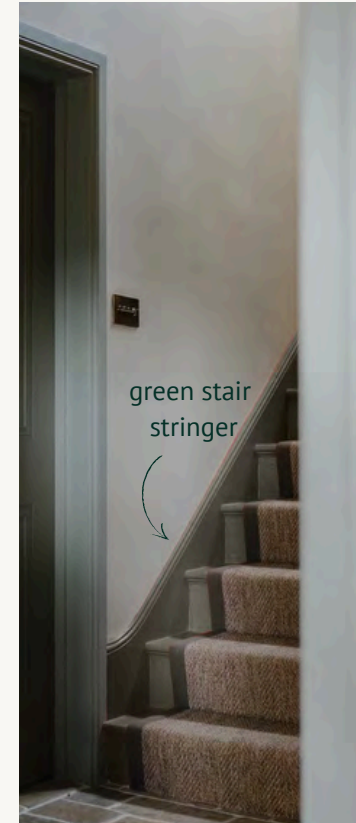


UTILITY ROOM



HALLWAY AND STAIRCASE

green doors

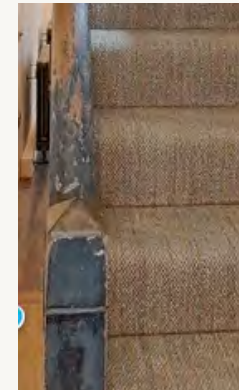


green stair stringer

warm chalky paint colour

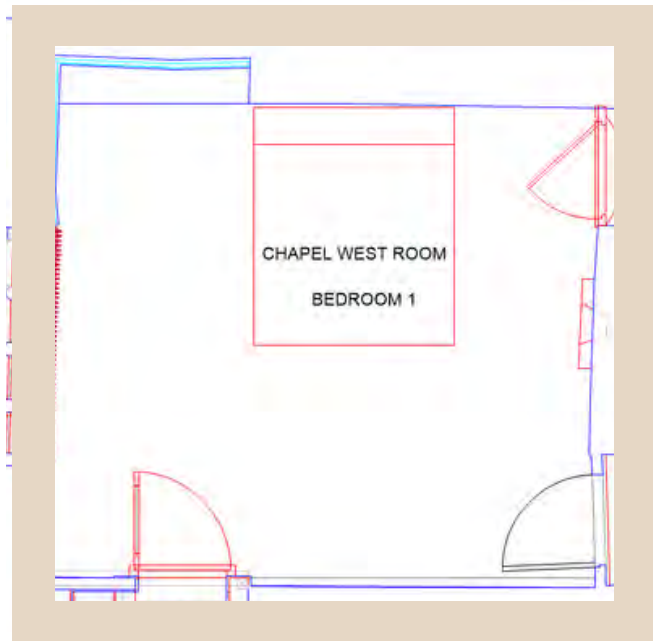
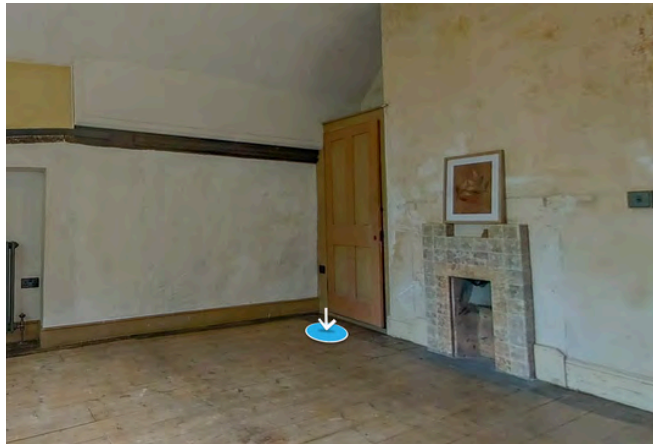
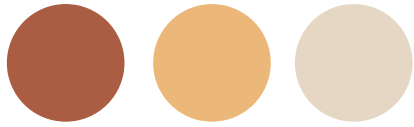


retain stone arch
'as found'



retain bannister
'as found'





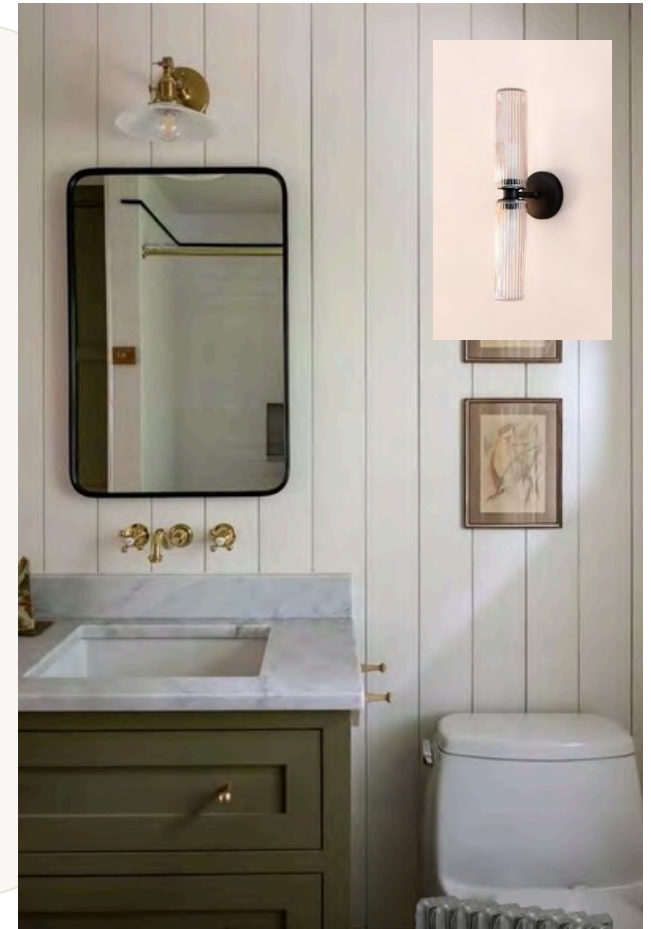
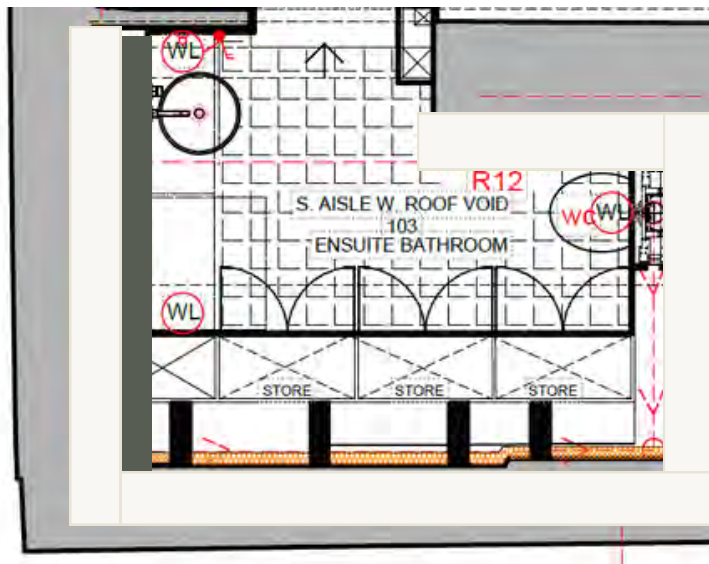
BEDROOM I



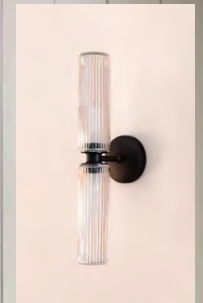


Option to fit out as wardrobe or en suite WC

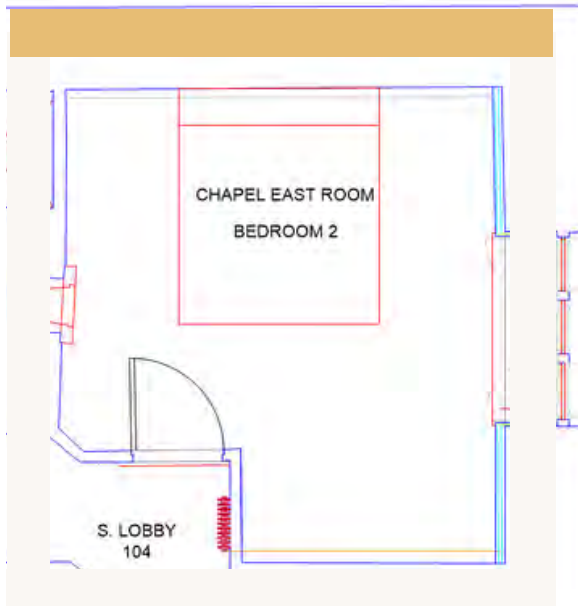
Painted timbers in chalky white



green vanity



BEDROOM | EN SUITE



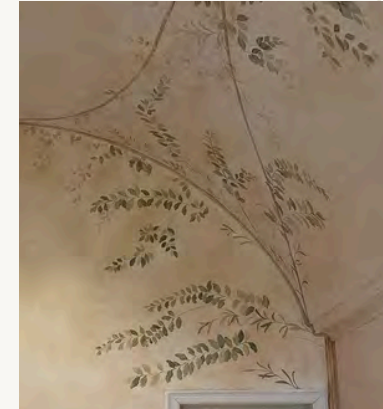
BEDROOM 2

green wardrobe

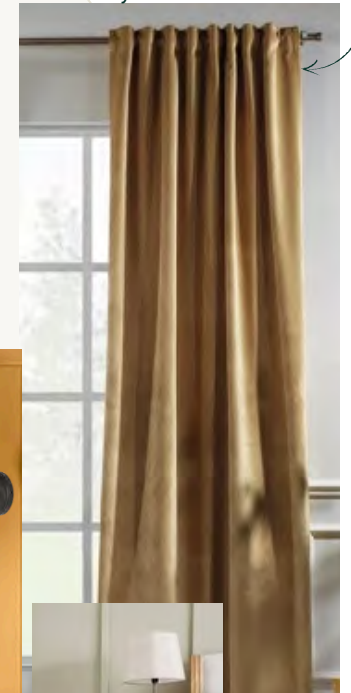


warm chalky paint colour

botanical painting to arched ceiling



soft yellow linen curtain



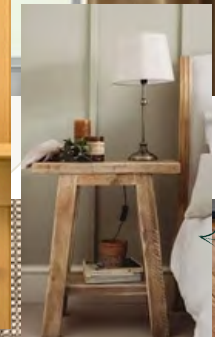
Timber headboard in vibrant yellow



bronze wall lights



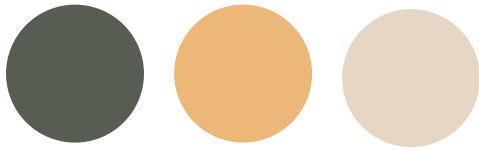
rustic bedside table



existing timber floor repaired

neutral tone rug





BEDROOM 3



Linen curtains in neutral

Warm stone wall colour

William Morris art

Antique storage furniture

Green bed

existing timber floor repaired

neutral wool rug

To explore how we can help you incorporate your personal style or implement the interiors seamlessly, please don't hesitate to contact us.

GEMMA WRIGHT

gemmawrightdesign.co.uk

01174627222

@gemmawrightdesign

GEMMA WRIGHT

gemmawrightdesign.co.uk

01174627222

@gemmawrightdesign